

# OptimiData

... for optimized data handling

## JP2view Engine for Microsoft Windows<sup>®</sup>

Reference Manual

Version 1.6

11 May 2005

(Windows XP / 2000 / ME)

Copyright © 2003-2005 OptimiData.

All rights reserved. Any copy or redistribution in any form or media as a whole or in parts requires the written permission of OptimiData.

All other brandnames and trademarks used within this manual are unlimited subject to the applicable trademark laws and the ownership rights of their registered owners.

# Contents

Contents	3
1 Introduction	4
2 Installation	5
2.1 Installing the JP2view Engine	5
2.2 Uninstalling the Software	7
3 Using the Software	8
3.1 View File Properties	8
3.2 Display Image Thumbnails	10
3.3 Convert JPEG2000 Images	11
3.4 Open JPEG2000 Images	13
Contact information	16

# 1 Introduction

The JPEG2000 JP2view Engine extends the Windows Explorer capabilities to display JPEG2000 compressed image files:

- In the thumbnail view
- In the file properties box

JPEG2000 compressed image files can now displayed the same manner as JPEG, TIFF, PNG or other image formats supported by Microsoft Windows.

For information about the thumbnail and the properties view of the Windows® Explorer please refer to the Windows® Help System and the Microsoft Website:

<http://www.microsoft.com>

For further information about the JPEG2000 image compression algorithm please refer to the appropriate standardization document. The document can be found at

<http://www.itu.org>

For further information about this JP2view Engine please refer the website:

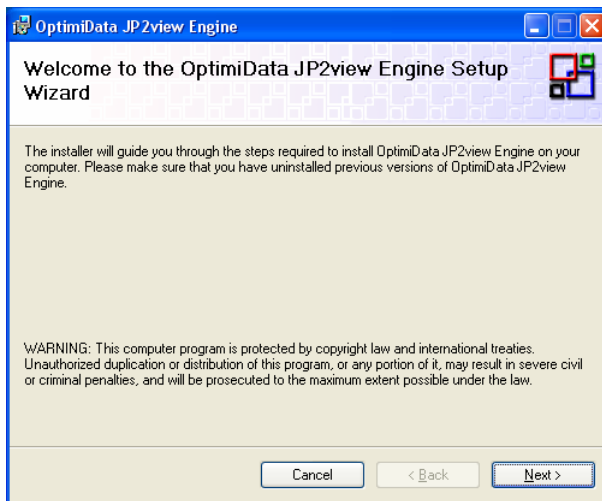
<http://www.optimidata.com>

## 2 Installation

### 2.1 Installing the JP2view Engine

The JP2view Engine is delivered as a Microsoft Installer file **JP2view\_Engine\_Setup.msi** for Windows Platforms.

To install the shell extension double-click the **JP2view\_Engine\_Setup.msi** file. The installer launches as depicted in Figure 1. Please follow the instructions given in the installation process.

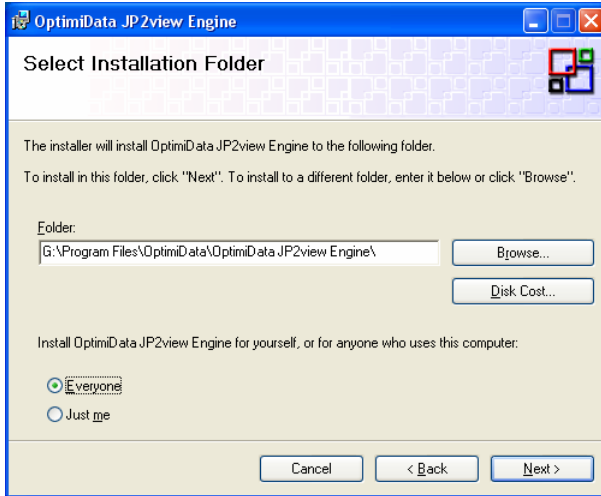


*Figure 1: Launching the Installer*

The installer will prompt you to select an installation folder for the installation files and to choose whether the JP2view Engine should become available for all users or not<sup>1</sup> (Figure 2).

---

<sup>1</sup> Not available with Windows ME

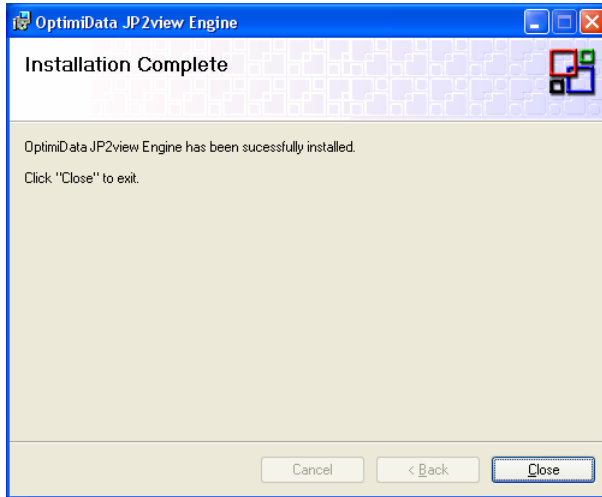


*Figure 2: Select Installation Folder*

The installer will copy the following files to your computer system:

- JP2view\_Engine.dll into the Windows System folder
- Manual\_JP2view\_Engine.pdf into the Application directory specified during the installation process

Once the installation is complete, the success of the installation process is shown as depicted in



*Figure 3: Successful installation of the Engine*

## 2.2 Uninstalling the Software

To uninstall the Shell Extension use the "Add and Remove Programs". This dialog box can be accessed via the Windows Control Panel and follow the normal uninstall process.

## 3 Using the Software

The JP2view Engine is used to:

- Display Image Properties of JPEG2000 files
- Display thumbnail images of JPEG2000 files within the Windows Explorer
- Convert JPEG2000 files into other image formats
- View JPEG2000 files within any Image visualization software

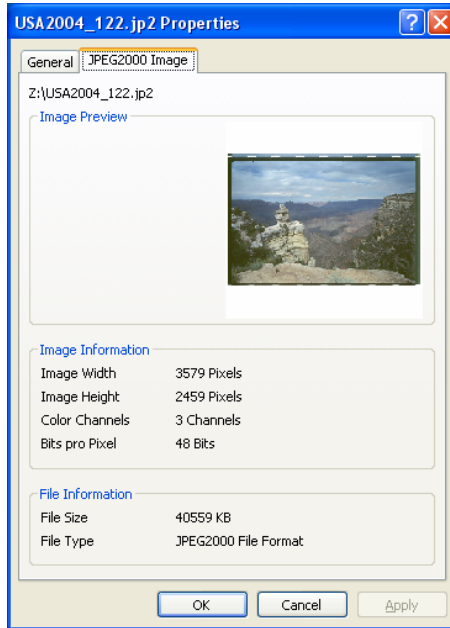
### 3.1 View File Properties

The OptimiData JP2view Engine adds a new JPEG2000 property page to the standard Windows File Properties. Right click on any JPEG2000 file (with extension \*.jp2, \*.jpc or \*.j2k) and open the "properties menu item" as the last entry of the Explorer context menu. A new property page is available as depicted in Figure 4.

The property page displays image information as the width and the height in pixels as well as the number of color channels and the Pixel depth (in bit) of the JPEG2000 image.

A preview gives a rough overview about the image.



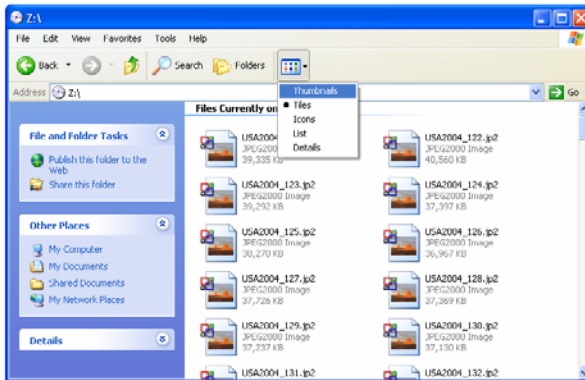


*Figure 4: JPEG2000 File Properties*

The file information section displays the size of the JPEG2000 file as well as the JPEG2000 specific subformat.

## 3.2 Display Image Thumbnails

The OptimiData JP2view Engine enables the Windows Explorer to display thumbnail images of JPEG2000 compressed files in its thumbnail view. To change the Thumbnail view please select the “Thumbnails” option in the display menu as depicted in Figure 5.



*Figure 5: Enable the Thumbnail view*

The view of the Windows Explorer will change to the Thumbnail View as shown in Figure 6 and JPEG2000 images will also be displayed like any other supported file formats.

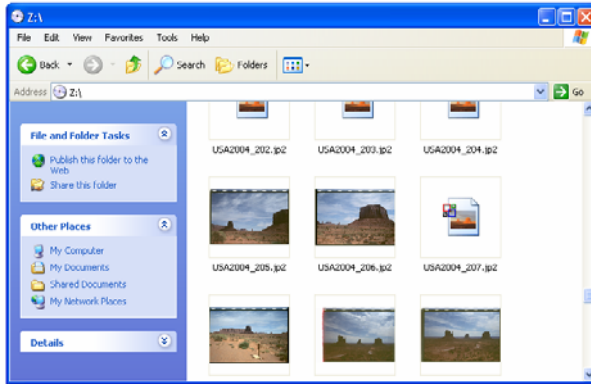


Figure 6: View Thumbnails of JPEG2000 images

### 3.3 Convert JPEG2000 Images

To convert JPEG2000 images into Windows Bitmap, JPEG or TIFF images, select one or more JPEG2000 images within the Windows Explorer and use the "Convert" function of the JP2view Engine.

You will be prompted to select the destination file format as well as the destination folder for the converted images as shown in Figure 7 and Figure 8.

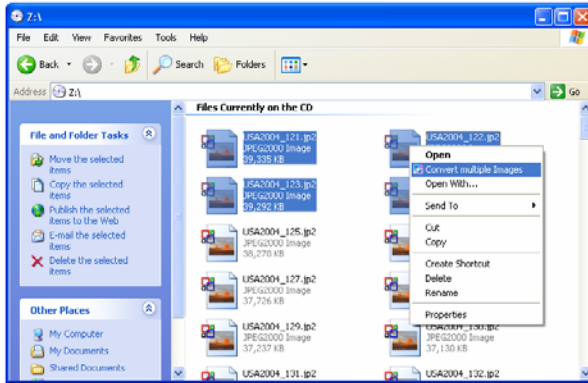


Figure 7: Convert JPEG2000 files

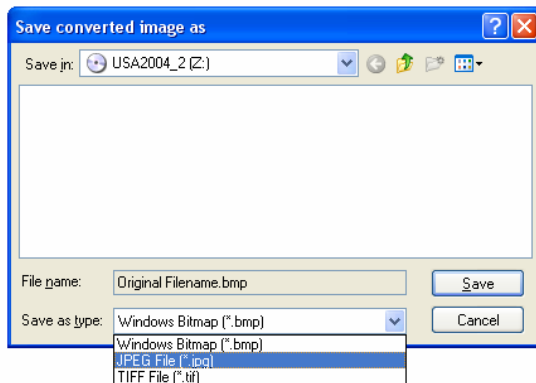


Figure 8: Select file format and folder

A status window informs you about the status of the conversion process. The conversion process is performed in the

background. You may proceed with your work as usual and may close the conversion status window (Figure 9).

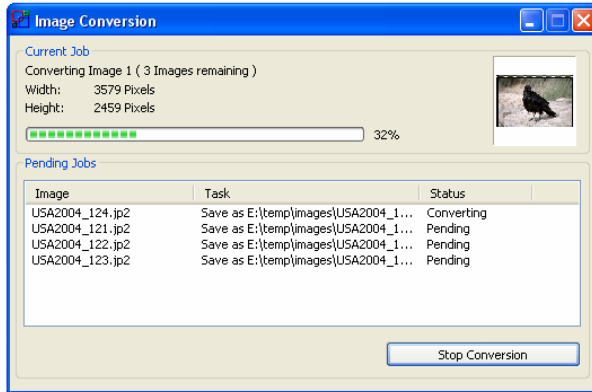


Figure 9: Conversion progress

You have access to the status window and the conversion process any time by clicking on the system tray icon as shown in Figure 10.

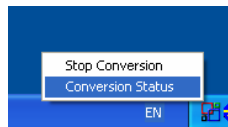
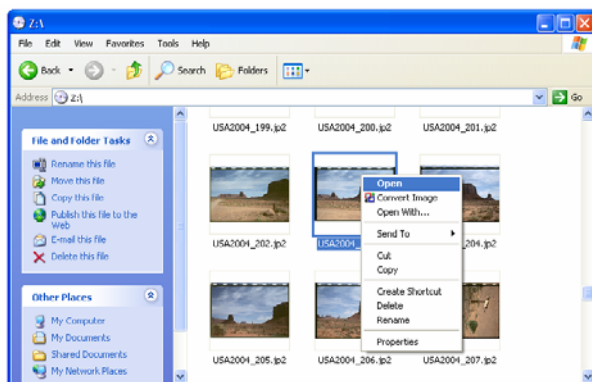


Figure 10: System Tray icon and popup menu

### 3.4 Open JPEG2000 Images

In addition to the conversion of JPEG2000 images into other image formats, you may open JPEG2000 images with your

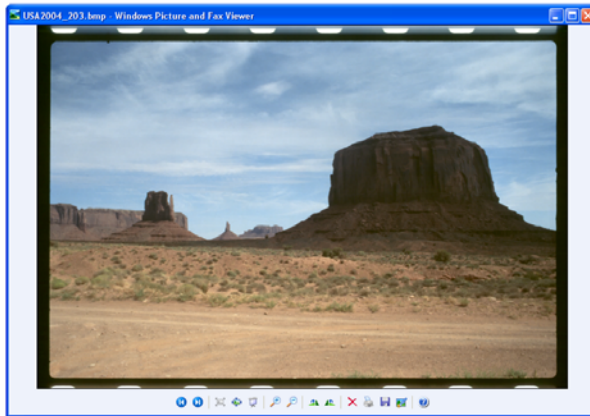
favorite image viewer program. Just double click on a JPEG2000 image or use the “Open” command of the Windows Explorer Context menu to open your image with any arbitrary Imaging application registered to display Windows Bitmaps as shown in Figure 11.



*Figure 11: Open JPEG2000 images*

The Image is converted on the fly into a Windows Bitmap which is passed over to the Imaging application.

An example is shown in Figure 12 which is using the Windows Image viewer to display JPEG2000 images.



*Figure 12: Using the Windows FAX viewer to display JPEG2000 images.*

## Contact information

OptimiData

Corporation for optimized data handling

Postfach 33 21 34  
14180 Berlin  
Germany

Fon: +49 (0)30/827 064 66

Fax: +49 (0)30/827 064 67

Email: [info@optimidata.com](mailto:info@optimidata.com)

URL: <http://www.optimidata.com>